



## CERTIFICATE OF ANALYSIS

20 Martin Ross Avenue, North York, ON, M3J 2K8, CANADA  
Tel: (416) 665-9696, Fax: (416) 665-4439  
Email: orders.trc@lgcgroup.com Website: www.trc-canada.com

### 1. Identification

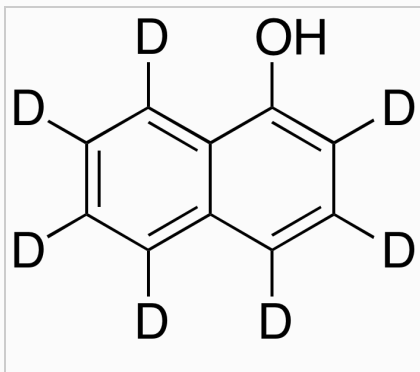
**Catalogue Number:** N367996

**CAS Number:** 124251-84-9

**Product:** 1-Naphthol-D7

**Synonym:** 1-Naphthalenol-d7; 1-Hydroxynaphthalene-d7; 1-Naphthyl Alcohol-d7; C.I. 76605-d7; Durafur Developer D-d7; Fouramine ERN-d7; Furrine 99-d7; Furrine ERN-d7; Furro ER-d7; NSC 9586-d8; Nako TRB-d8; Naphthol-1-d8; Naphthyl-1-ol-d8; Tertral ERN-d7; Ursol ERN-d7; Zoba ERN-d7;  $\alpha$ -Hydroxynaphthalene-d7;  $\alpha$ -Naphthol-d7;  $\alpha$ -Naphthyl Alcohol-d8;

**Structure:**



**Molecular Formula:**

$C_{10}HD_7O$

**Molecular weight:**

151.21

**Source of Product:**

Synthetic

**Solubility:**

Chloroform (Slightly), DMSO (Slightly), Methanol (Slightly)

**Lot Number:** 5-SUM-78-1

**Purity:** 97%

**Shipping Condition:** This Product Is Stable To Be Shipped At Room Temperature

**Storage Condition:** 4°C

### 2. Warning

**Warning 1:**

**Warning 2:**

**Warning 3:**

### 3. Analytical Information

Tests:	Specifications:	Results:
Appearance	White to Pale Brown Solid	Off-White to Pale Brown Solid
NMR	Conforms to Structure	Conforms
HPLC Purity	Report Result	99.66% (210 nm)
MS	Conforms to Structure	Conforms
Isotopic Purity	>95%	98.8%

**Additional Information:**

Normalized Intensity: d0 = 0.01%, d1 = 0.01%, d2 = 0.02%, d3 = 0.02%, d4 = 0.02%, d5 = 0.30%, d6 = 7.46%, d7 = 92.17%

Purity is based on the analytical results of the tests performed. NMR and Elemental Analysis (if available) may have an accuracy of  $\pm 2\%$ . Isotopic purity is based on mass distribution observed. The contents of the specifications are subject to change without advance notice, and the specification values displayed here are the most up to date values.

### 4. Signatures

Reviewed By	Reviewed By	C of A Approved By	Test Date	Retest Date
Sarbjeeet Kaur	Toni Rantanen	Chanell Chu	9/19/2022	9/17/2026
				